



ADDENDUM, sw release 18.3 for Vulcan Series

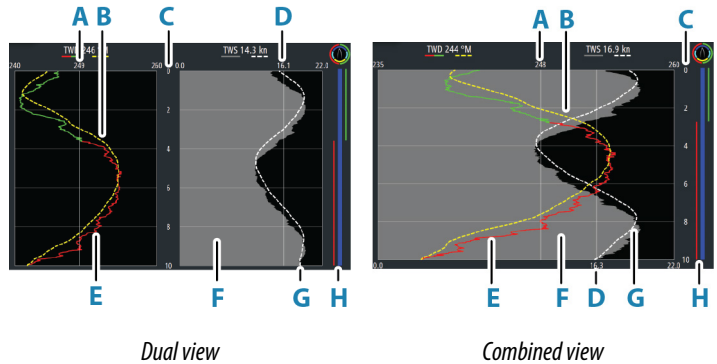
This addendum documents new features that are included in this software release.

Feature	Page
The Wind Plot panel	3
User interface improvements	6
C-MAP Embark	7
Upload sonar logs to C-MAP Genesis	8
Dual mode WiFi	8

The Wind Plot panel

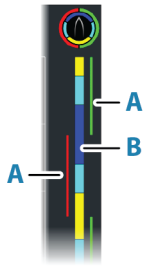
A Wind Plot is a special type of Time Plot specifically designed to help understand recent changes in wind speed and direction.

The Wind Plot can be displayed as a dual or combined view.



- A** True Wind Direction (TWD) average*
- B** TWD trend
- C** Time range
- D** True Wind Speed (TWS) average*
- E** TWD plot
- F** TWS plot
- G** TWS trend
- H** Tack bar*

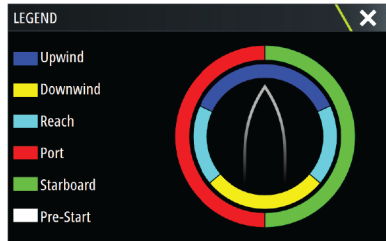
* Optional items. Optional items can be turned on/off individually from the Wind Plot panel menu.



Tack bar

The tack bar shows wind angle indications (A) and a point of sail/pre-start status bar (B) corresponding to the data recorded at the time. Tack bar data uses the same time scale as the main Wind Plot window.

Select the tack bar to view the tack bar legend.



Setting up the page

Use the Wind Plot panel menu to set up the page.



Time range

Sets the time range interval.

Trend averaging

Sets the trend average. A low setting shows the highest detail (closest to the raw data, lowest amount of damping), and a high setting shows a smoother trend (highest amount of damping).

TWD options

Display options

Sets the plot to show TWD only, TWD trend only or both the TWD and trend.

Average line

Shows or hides the TWD average line on the plot image.

Tack colors

Select to show the TWD in starboard (green) and port (red) color indicators or unselect to show the TWD as a constant (blue) color.

TWS options

Display options

Sets the plot to show TWS only, TWS trend only or both the TWS and trend.

Average line

Shows or hides the TWS average line on the plot image.

Tack bar option

Show

Shows or hides the tack bar.

Start line

Shows or hides the race start time on the tack bar. When enabled, the tack bar shows the start line, drawn as a horizontal line across the tack bar. The start line is displayed at the time the race timer reached zero.

Tack averages

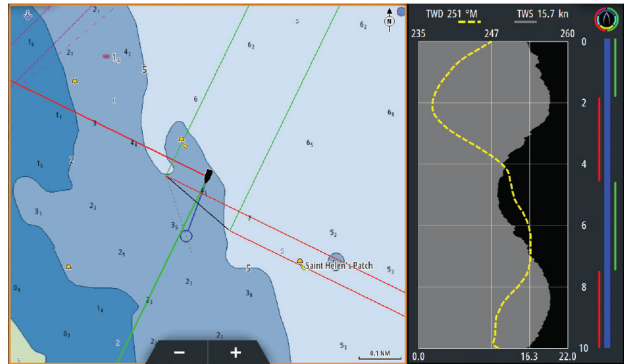
Displays a table listing the tack averages over the current time period. This display can be useful for checking calibration or average performance on each tack.

TACK AVERAGES			
	Port	Starboard	
TWA (°)	-40	42	
TWD (°M)	249	243	
TWS (kn)	15.0	16.2	
Boat Speed (kn)	9.1	5.9	
Heading (°M)	288	201	

Mode option

Sets the Wind Plot as a dual or combined view.

The combined view is designed to allow full use of the Wind Plot in a smaller panel, for example alongside a chart window.



User interface improvements

New DownScan, SideScan, and 3D Sonar icons on home page

The SideScan, DownScan, and 3D Sonar icons replace the StructureScan icon on the home page. The separate icons make it easier to use the applications and customize images.

Application menu changes

To simplify the user experience, echosounder applications and the chart application menus have changed.

Submenu options are moved to the new "More options" submenu and the "View" main menu option removed.

Tool panel change

The tool panel option "Files" is renamed "Storage".

C-MAP Embark

You can access the C-MAP Embark web site from a PC or use the C-MAP Embark app on your smart device to manage:

- waypoints
- routes
- tracks

Use the unit's C-MAP Embark feature to synchronize between the unit and C-MAP Embark.

→ **Note:** PredictWind waypoints are not included in the C-MAP Embark feature.

Requirements

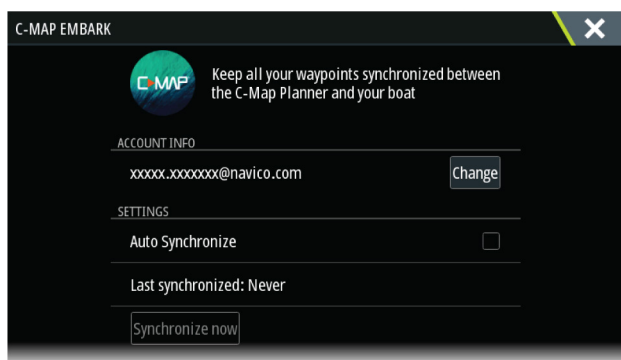
- An account with C-MAP Embark
- To synchronize, the unit must be connected to the internet.

Synchronizing

To synchronize the MFD and C-MAP Embark, open the C-MAP Embark feature from the system controls dialog or the services settings dialog.

After sign-in, the system advises the last time synchronizing occurred and the following options are available:

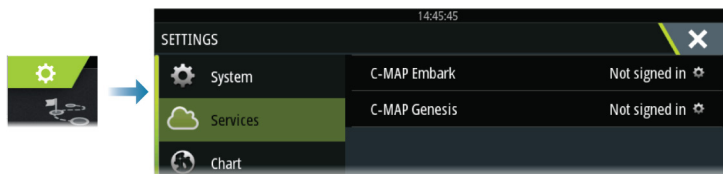
- Change - use to change sign-in credentials
- Auto Synchronize - synchronizing occurs periodically in the background when connected to the internet
- Synchronize now - synchronizing occurs immediately



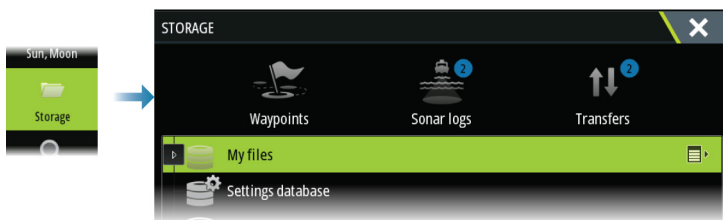
Upload sonar logs to C-MAP Genesis

To upload sonar logs to C-MAP Genesis do one of the following:

- Use the services option. Follow the prompts to sign in and transfer the log files to C-MAP Genesis.



- Use the Storage dialog. Select the sonar logs icon and the logs you want to transfer. If you are already signed in to C-MAP Genesis the files are transferred. If you are not signed in, select the transfers icon and follow the prompts to sign in and transfer the log files to C-MAP Genesis. You can sign in and transfer files at a later time when the unit is connected to the internet.



Dual mode WiFi

The internal WiFi module can now act as a WiFi access point and as a WiFi client at the same time. The internal WiFi module can only act as one access point and one client simultaneously.

→ **Note:** Dual mode WiFi is not available with external WiFi modules (e.g. WiFi-1).

The internal WiFi module acts as an access point when a phone or tablet is connected for remote control of the unit via the Link app on the phone or tablet. The internal WiFi module acts as a client when connected to a WiFi network.

The Wireless settings dialog options and the options displayed when Wireless is selected in the System Controls dialog are

changed accordingly. The system provides prompts to help you make the selected connection:

- Connect to the Internet
- Connect your phone/tablet

